

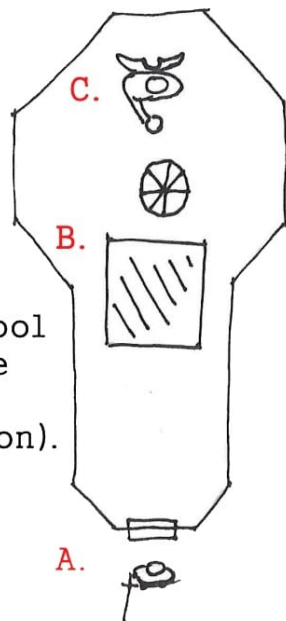
The Shard of Akon

By Theo Olsen <http://creativecommons.org/licenses/by-sa/3.0>

There are rumors of a shard of the spear of Akon, a god of justice. For those that wield the shard, they can force someone to tell the truth by touching them with the spear. The Temple rests on top of a snowy mountain with dangerous icy cliffs.

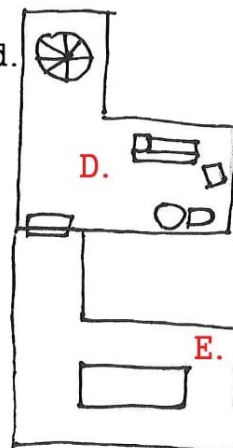
Read rooms in alphabetical order.

D. Rations and bedding
(the home of the knight standing outfront.)



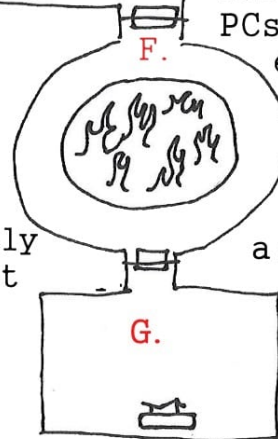
B. This glistening pool of water burns those who are impure (DM discretion).

C. The staircase is initially concealed. There is a large statue of a winged knight missing her left hand and holding a bowl with her right. Once holy water is poured into the bowl the staircase will open. Optionally the statue can be destroyed and the stone will fall away to reveal a very dangerous angel similar to the one from area F. It will attack mercilessly, but when seriously injured it will try to teleport away.



E. As the PC's move through these halls a stone knight will appear in their way. It is extremely sturdy (indestructible by conventional means) and shuffles forwards slowly. All the PC's have to do is accept defeat and walk around it through another pathway. It will not pursue those who enter room F.

F. A pit of vicious fire lies in the center of this room. As the PCs enter the room an angel encased in silver armor with a halo of flame, holding a flaming sword in its right hand and missing its left teleports into the room with a flash of blinding light. It fights viciously and when it tells the PC's that to wield the shard of akon they must cleanse their hand in fire, and only then will their souls be pure enough to withstand akon's wrath. Then leaves. If a PC puts an appendage into the fire it will be rooted in place as it is burned off.



A. At the top of the mountain rests a minimalistic stone chapel and a motionless knight in silver frosted armor holding a longsword in his right hand, and missing his left. At first he will tell the adventurers to get lost, unless they display honest desire to worship akon. If they don't he will attack.

G. The shard of akon rests on a slab of stone in this room, emitting a blinding light that acts as a heat ray. If someone has sacrificed part of their body to akon they will feel no discomfort and can freely walk forwards and retrieve the shard.

